

oakheart

£400,000

Offers In The Region Of
Church Road, Brettenham



This three-bedroom semi-detached home enjoys a desirable setting, close to local amenities yet surrounded by beautiful countryside. From the rear of the property, uninterrupted views stretch across open fields, creating a peaceful outlook that changes with the seasons.

Inside, the house offers well-proportioned living spaces filled with natural light, with a layout that flows easily and suits both everyday life and entertaining. Upstairs, the three bedrooms are

arranged around a central landing, with the main bedroom enjoying the best of the countryside scenery.

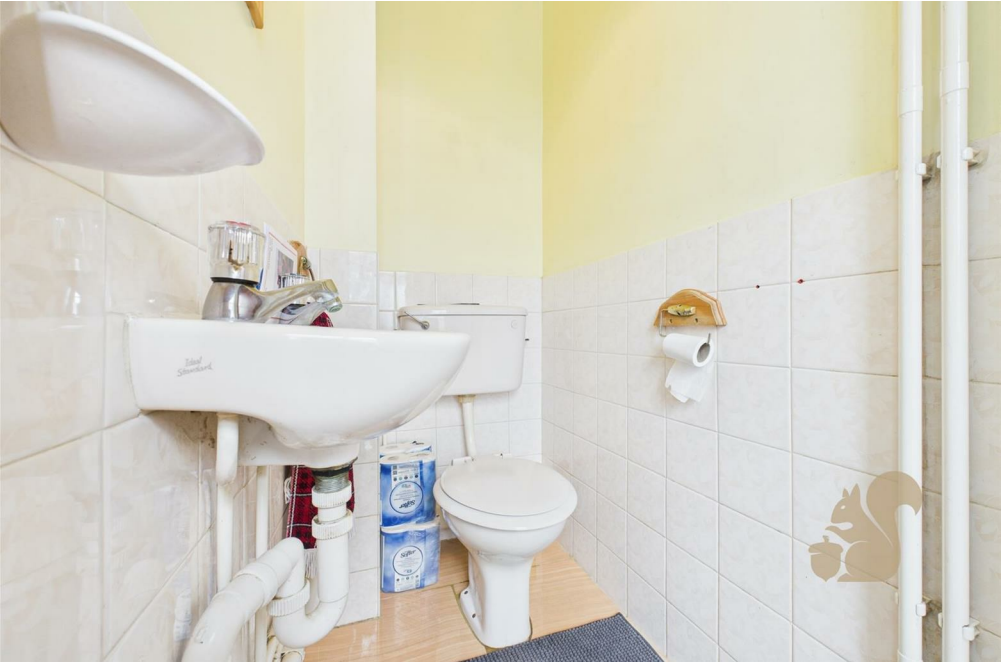
The garden is a real highlight, backing directly onto open fields with no houses behind. From here, the wide rural views create a wonderful sense of space and privacy, making it an ideal setting for relaxing, outdoor dining, or simply enjoying the surrounding landscape.

To the front, there is a generous driveway, single garage and plenty of parking.

This home offers the perfect balance of convenience and charm, combining village-style living with outstanding countryside views, all within easy reach of shops, schools and transport links.











Local Authority:

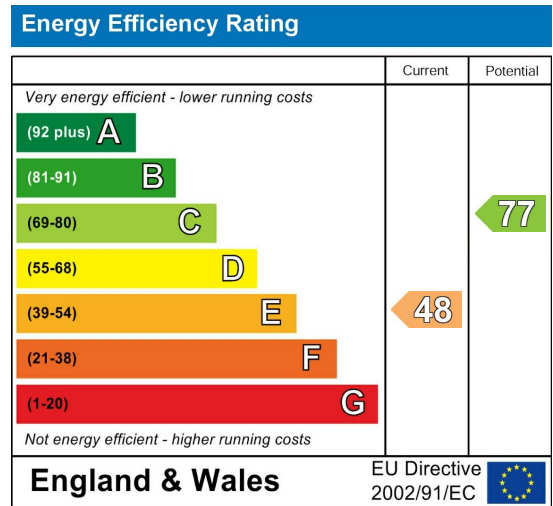
Babergh

Tenure:

Freehold

Council Tax Band:

B



Agents Note: Whilst every care has been taken to prepare these particulars, they are for guidance purposes only. All measurements are approximate and are for general guidance purposes only and whilst every care has been taken to ensure their accuracy, they should not be relied upon.